

Lynn Small

Paintings



Works on Paper



New Media
Installations

Lynn Small

Paintings

A Life in Art

CoLabART
LynnSmall+DennisPaul

Works on Paper

1966-2015

Mixed + New Media
Installations



© Lynn Small
All rights reserved.



viewart.com/LynnSmall.htm

Betram Katz

Robert Blackburn

Robert Kaupelis

Automatic Drawing
New York 1966
Mixed-media on Paper
24"H x 18"W

Irving Sandler

Milton Resnick



Angiola Churchill

Bernard Kasso

Esteban Vicente

Hale Woodruff





viewart.com/LynnSmall.htm

*All three Small Sisters
attended the High School
of Music and Art – I was
last, graduating with art
honors and went on to
New York University.*

Another Day
New York 1968
Mixed-media on Canvas
42"H x 36"W

viewart.com/LynnSmall.htm

Earth Stains Series



Earth Stains I
Nerja, Spain 1971
Mixed-media on Canvas
30"H x 26"W



Mexican Series



The Offering
Cuernavaca 1974
Mixed-media on Linen
68"H x 44"W

viewart.com/LynnSmall.htm



viewart.com/LynnSmall.htm



The Eagle

Cuernavaca 1974

Mixed-media on Paper

28"H x 20"W

MEXICAN SERIES

Available as an Archival Pigment Print



viewart.com/LynnSmall.htm



The Prince
Cuernavaca 1974
Mixed-media on Linen
42"H x 34"W
MEXICAN SERIES

*I am not sick, I am broken...but I am
happy to be alive as long as I can
paint...—Frida Kahlo*



viewart.com/LynnSmall.htm



El Malabarista Para los Dioses
[The Juggler For the Gods]

Cuernavaca 1974

Mixed-media on Paper

30"H x 22"W

MEXICAN SERIES

Available as an Archival Pigment Print

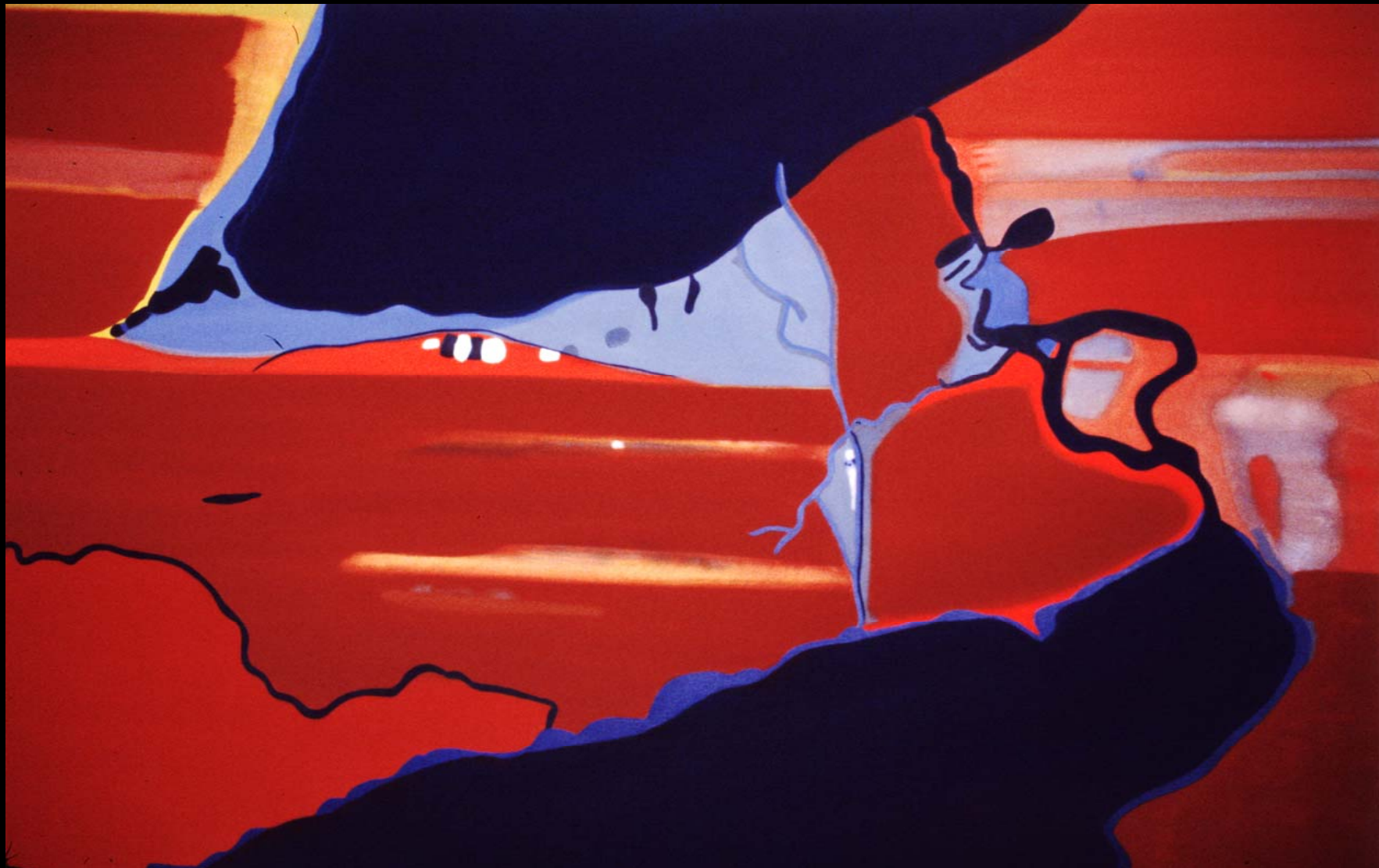


Untitled, Earth Stains

New York 1977

Mixed-media on Canvas

36" H x 48" W



Niagara Yaddo 1978
Landstat Earth Series
Mixed-media on Canvas

54" H x 72" W

viewart.com/LynnSmall.htm





viewart.com/LynnSmall.htm



Untitled, Earth Stains
New York 1982
Mixed-media on Arches
26"H x 40"W



Spirit Guide VI 1997
Mixed-media on Amate
26"H x 19"W

S p i r i t G u i d e s

Available as Archival
Pigment Prints

viewart.com/LynnSmall.htm



Spirit Guide II 1997
Mixed-media on Amate
30"H x 22"W



Spirit Guide IX 2011
Mixed-media on Amate
23"H x 16"W

S p i r i t G u i d e s



Spirit Guide VII 1999
Mixed-media on Amate
23"H x 16"W

viewart.com/LynnSmall.htm

Light Series

Golden Light I
California 2002

Mixed-media on Canvas
30"H x 26"W





Untitled, Golden Light
California 2011
Mixed-media on Canvas
36"H x 28"W

*Life beats down and crushes the
soul. Art reminds us that you
have one. —Stella Adler*

Golden Light II
California 2002
Mixed-media on Canvas
30"H x 26"W

*I think I'm beginning to learn
something about it [painting].*
—Pierre Auguste Renoir, age 78





viewart.com/LynnSmall.htm

I have been a four-time finalist for the prestigious Adolph and Esther Gottlieb Foundation Grant in 2004, 2011, 2013, and 2015.

Golden Light Diptych
California 2003-04
Mixed-media on Canvas
40"H x 60"W



Autumn Light I Yaddo 2003

Mixed-media on Canvas

72"H x 96"W

Autumn Light II Yaddo 2003

Mixed-media on Canvas

72"H x 96"W



I have always felt that the periods of time spent away from New York helped to nurture my creative endeavors, paving the way for collaborating with artists from around the world.

viewart.com/LynnSmall.htm



Autumn Storm, Naturam Abstractam [Desert]

Earth Stains California 2013

Mixed-media on Stonehenge

22"H x 30"W





Autumn Seeds
Yaddo 2003-04
Mixed-media on Somerset
30"H x 22"W





Autumn Birch
Earth Stains California 2013
Mixed-media on Somerset
30"H x 22"W



Fall
Spring

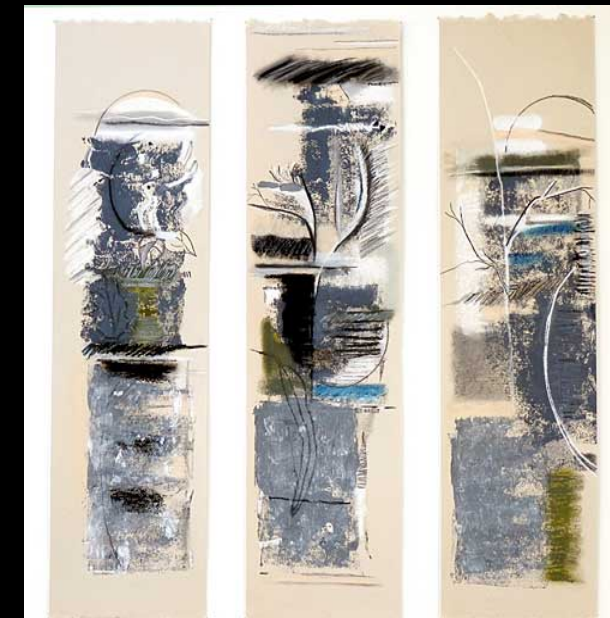


Summer
Winter

Four Seasons Triptychs
Earth Stains California 2013-14



Mixed-media on Rives BKF
22.5"H x 6"W each panel



viewart.com/LynnSmall.htm



Autumn Storm, Naturam Abstractam

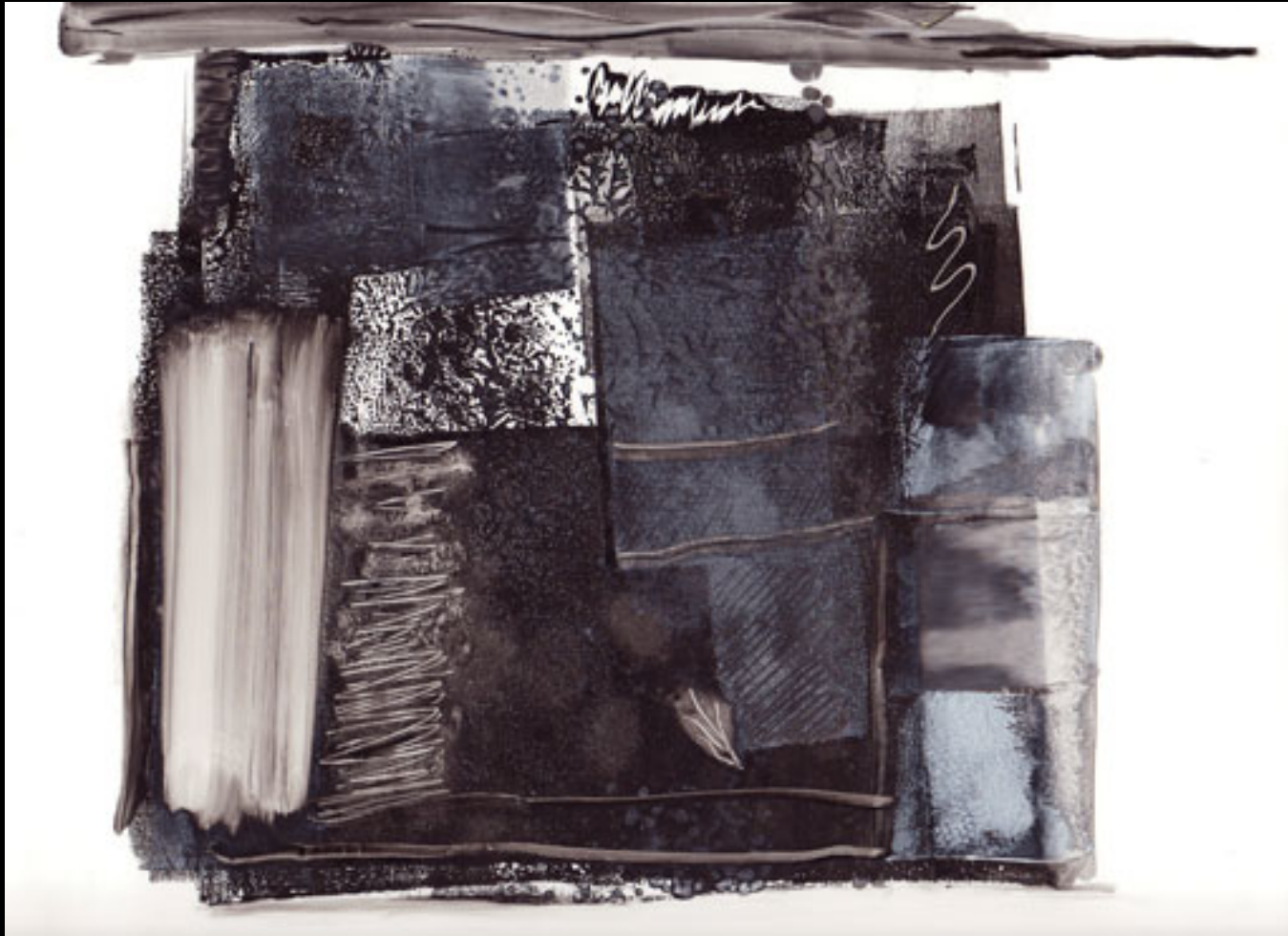
Earth Stains California 2013

Mixed-media on Stonehenge

22"H x 30"W



Monoprints with Handpainting
Berkeley Series
2005-2009



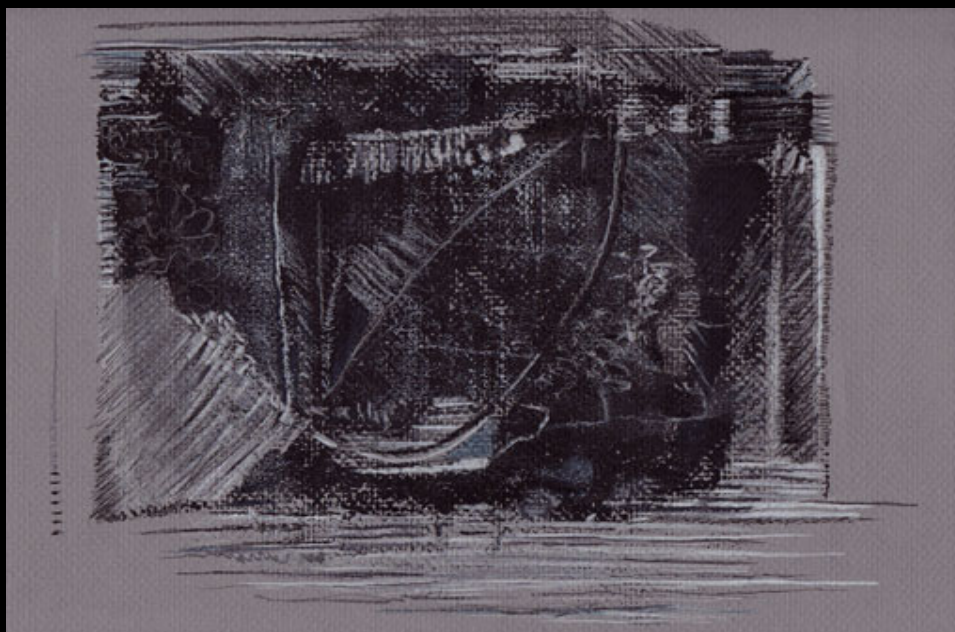
Reflections

Berkeley Series

Monoprints



Double Figure



Leaf Motif I

*Motion in
Black + White I*

Berkeley Series 2005-2009 

Monoprints



Study in Gray Diptych

Available as an Archival Pigment Print

Topanga Series

2008-2009



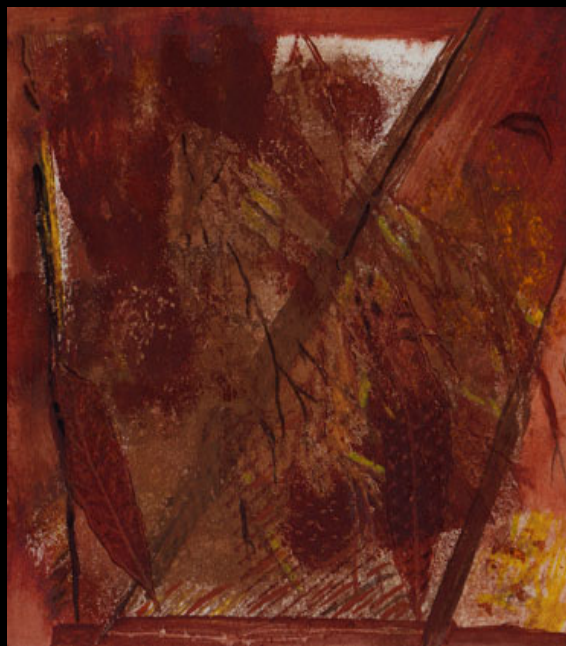
Monoprints



Topanga Nocturne Triptych

Monoprints

Topanga Series



Leaf Motif
Study in Brown Triptych



Topanga Series

Monoprints

Leaf Motif III

viewart.com/LynnSmall.htm

Available as an Archival Pigment Print

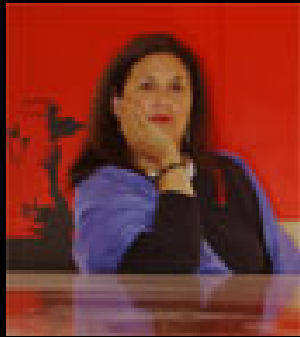
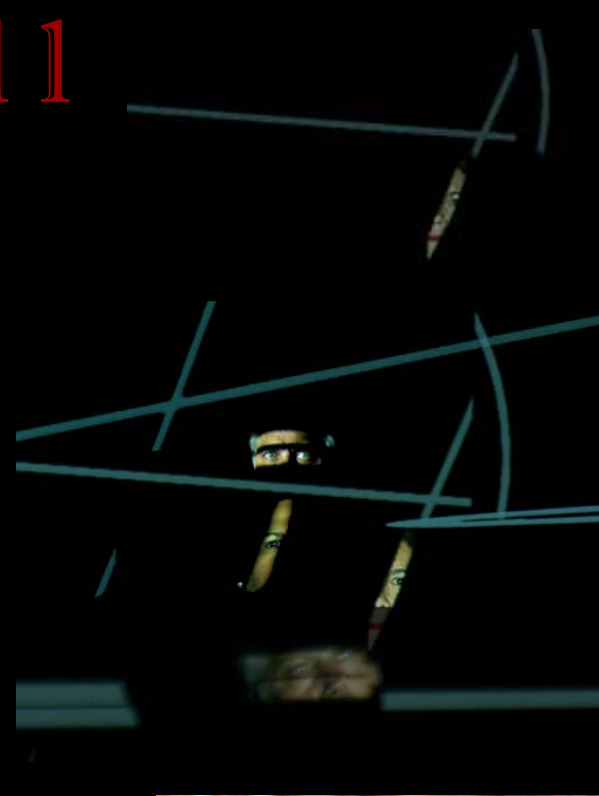
CoLabART

Lynn Small + Dennis Paul

Begun during our first joint-residency fellowships to Yaddo in 1978, our third artist - **CoLabART** - is a seamless fusion of painting, photographic processes and new digital modalities that reflect the changes in the making of marks and the creation of 21st-century art.



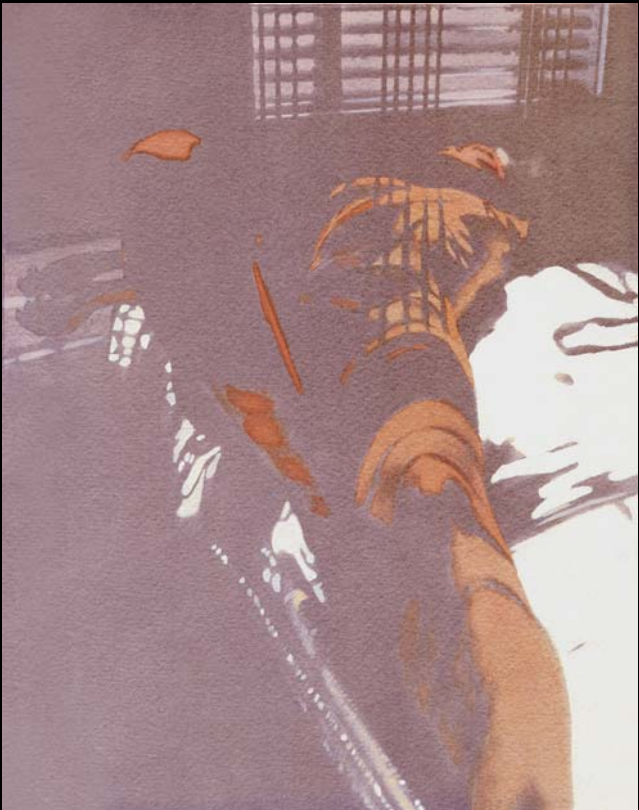
Lynn Small



A Life in Art



CoLabART • Lynn Small + Dennis Paul



Yaddo Nudes
Pink Room + Pine Tree

nylon
ENKALURE



There's no telling
what will become of it.
But Fashion Metamorphosis
has a pretty good idea.

Our earliest collaboration
on the corner of 37th St + Seventh Avenue
◻ Fashion Metamorphosis ◻
quickly became known as
the Fine art of Fashion
with *Art by the Yard*.
It sold in the finest boutique
and department stores
Coast-to-Coast.



Presenting *Woman as Work of Art*. In hand-painted designs from the *Immagini* Collection by Fashion Metamorphosis, Inc. on the soft fluidity of textured Enkalure® nylon. (Which feels as good to wear as it is beautiful to look at.)
The tunic, with cowl that can be worn as a hood, in purple and brown on drabblue or red and black, \$24 (wholesale). The pull-on pants, in brown or black, \$15 (wholesale). The overskirt, which can also be worn as a cape, in matching design, reversing to brown or black, \$35 (wholesale).
We can thank Charlton for the fabric. Fashion Metamorphosis, Inc., 526 Seventh Avenue, New York, N.Y. 10018, gets credit for this fine-art hand-painted collection. But credit for versatile Enkalure goes to us, American Enka. See us at 530 Fifth Avenue, New York, N.Y. 10036. (212) 730-5352.

ENKA

Appeared in *Women's Wear Daily* 1975

Appearing in *WOMEN'S WEAR DAILY*

CoLabART • Lynn Small + Dennis Paul

viewart.com



The Schoolhouse

PA Dutch Paintings



Fruits of Labor-The Plover



The Dairyman

PA Dutch Landstrips



Sunset on Shinnecock Bay



ColabART • Lynn Small + Dennis Paul

Winter Pond Diptych



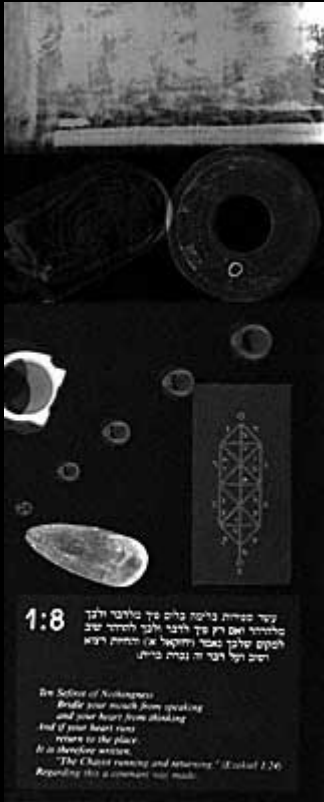
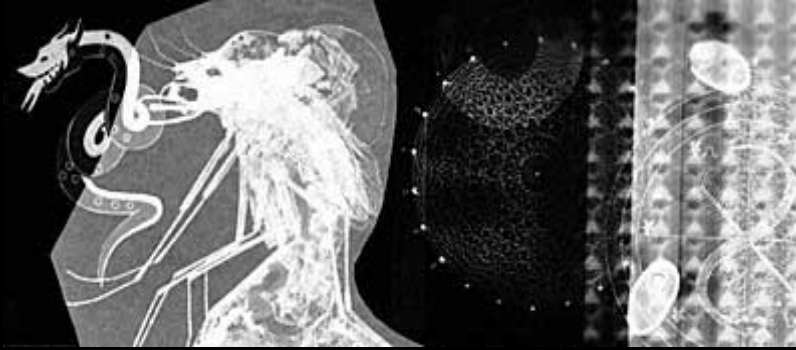
Reflections



Long Island/Hamptons Landstrips



KABBALAH SERIES



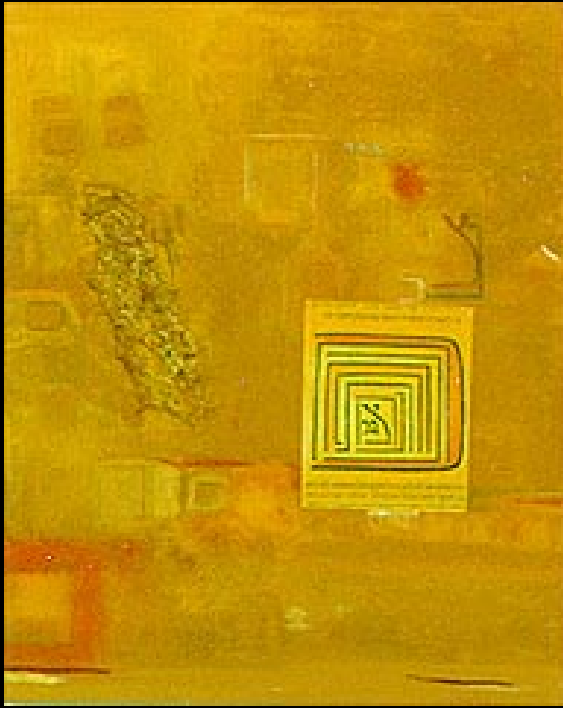
Hidden + Revealed



CoLabART • Lynn Small + Dennis Paul

viewart.com

KABBALAH SERIES



In The Presence of Light 2000

[Shekhinah Triptych]

LightJet Digital Photograph

*The hybridity of traditional and new media is a facet
of my ongoing praxis.*

CoLabART • Lynn Small + Dennis Paul

viewart.com

"The strings touched by the right or left hand move,
and the sound is sweet to the ear.

And from the ear the sensation travels to the heart,
and the heart to the spleen, and the enjoyment of the different melodies
produces ever new delight. It is impossible to produce it
except through the combination of sounds,
and the same is true of the combination of letters.

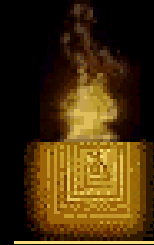
It touches the first string,
which is comparable to the first letter,
and proceeds to the second, third,
fourth, and fifth, and the various forms combine.

And the secrets, which express themselves in these
combinations, delight the heart which acknowledges its God
and is filled with ever fresh joy..."

RABBI ABRAHAM ABULAFIA



ColabART • Lynn Small + Dennis Paul



Letters of Foundation

AlephBet



Every letter is a whole world.
—Dov Baer, Maggid of Mezeritch



Multimedia Installation Projects

Tapestry of Hope



Partial View

Threads That Bind Us - Earth Elegies I
Woman of Valor Exhibition 1993-94

Yeshiva University Museum Commission New York





In The Beginning - Earth Elegies II

ELEMENTS

Barnsdall Art Park, Los Angeles Municipal Gallery

November 18th 1998 - January 17th 1999

Kabbalah/Earth Installation



CoLabART • Lynn Small + Dennis Paul

viewart.com



*Original CoLabART SoundScapes
accompany our immersive Installations.*



Wall Drawing



viewart.com

IN THE BEGINNING
EARTH ELEGIES II

Barnsdall Art Park, Los Angeles 1998-99

INSTALLATION DETAILS

Artists have always been early adopters and often change the world.

Kabbalah Series



Divine Utterances 1999

Mixed-media on Panel

LightJet Photograph



Before One 1998

Mixed-media Digital Image

LightJet Photograph



DIVINE UTTERANCES

Available as a LightJet Photograph



Sunset on the Marsh 1989-91
Mixed-media on canvas and panel
36"H x 48"W

VOICE OF THE LANDSCAPE

EARTH ELEGIES III

Installation-in-Progress

Digital 4-Channel Video with
Original SoundScape



From Kaaterskill Falls
to the 21st-Century



*A visualization of the new century's experiential learning potential
through the transformative powers of art and technology.*

A Palimpsest of Time and Place



LYNN SMALL

www.viewart.com

LynnSmall@viewart.com

www.YouTube.com/CoLabART

cells:

917.238.7638

310.741.0474

skype:

CoLabART



ARTIST STATEMENT

Paintings

Works on Paper

Prints

Monoprints

CoLabART
Installations
+ Videos

Individually and collaboratively the work has been exhibited in museums and galleries throughout Europe, Mexico and the United States. It is included in numerous public and private collections as well as receiving commissions, grants and residencies.

